



**Comhairle Contae
Dhún na nGall**
Donegal County Council

**Variation No. 2 (Wind Energy) to the
County Donegal Development Plan 2012-
2018 (as varied)**

Variation No. 2 (Wind Energy) to the County Donegal Development Plan 2012-2018 (As Varied)

Introduction

At the meeting of Donegal County Council on 30th June 2014, the Members decided to make Variation No.2 (Wind Energy) to the County Donegal Development Plan 2012- 2018 (as varied). The content of the Variation is set out on the following pages.

(Note: Deletions of text are shown in black ~~strikethrough~~; insertions of text are shown in [blue lettering](#)).

Amendment No. 1:

Amend the text at Chapter 7, section 7.2.1, page 108 of the Core Document, in relation to area identified as 'Not Favoured' so that it reads as follows (NB: New text in [blue](#)):

Not Favoured – Areas where wind energy proposals will not be favoured have been identified due to the significant environmental, heritage and landscape constraints. These include; SAC and SPA (Natura 2000) Sites, NHAs, unspoiled areas of EHSAs, Areas of Fresh Water Pearl Mussel [including the catchments identified in the Sub-Basin Management Plans for Clady Eske, Glaskeelin, Leannan, Owencarrow and Owenea \(as listed in S.I. 296 of 2009\)](#), important views and prospects. It is considered that these areas have little or no capacity for wind energy development.

Map 9 Wind energy highlights the 'Area Open to Consideration' and the 'Not Favoured areas'.

The Council recognise the opportunities arising from the use of more efficient turbines on established windfarms, as they generate much higher energy yields per turbine, thereby reducing the need for additional turbines. In most cases the infrastructure, roads, hardstand, turbines, sub station and fences have already been established, so there should be limited additional impact.

To reflect the increasingly complex interaction of the issues involved in considering wind energy proposals the Council is committed to further developing the Renewable Energy Strategy that recognises the potential role of the county in energy generation in the context of the proper planning and sustainable development of the area. The wind energy policies herein must be considered in the context of the development and technical standards relating to wind energy set out in Chapter 10 and in the context of all other relevant objectives and policies set out in this Plan.

Amendment No. 2

Insert a new objective at Chapter 7, section 7.2.2, page 109 of the Core Document so as to state (NB: New text in blue):

- E-O-6:** To ensure that wind energy developments do not adversely impact upon the existing residential amenities of residential properties, and other centres of human habitation (as defined at 10.6.7) in Chapter 10 Development and Technical Standards.

Amendment No. 3

Amend Map 9, 'Wind Energy' to show the addition of 6 Sub-Basin Catchments of SAC populations listed in S.I. 296 of 2009 (First Schedule) for the Fresh Water Pearl Mussel as 'Not Favoured for Wind Energy Developments' as shown in accordance with the Appendix 1 of this document.

Amendment No. 4

Amend the text at Chapter 10, section 10.6.5 of the Core Document so as to read as follows (new text shown in blue; text for deletion shown in strikethrough).

- 10.6.5** Wind turbines must meet the requirements and standards set out in the DEHLG Wind Energy Development Guidelines 2006, or any subsequent related Guidelines and in addition must not be located within:
- (a) The zone of visual influence (ZVI) of the Glenveagh National Park
 - (b) The zone of influence/ flight path at Donegal Airport.
 - (c) The 6 Fresh Water Pearl Mussel (S.I. 296 of 2009) catchments contained in the Freshwater Pearl Mussel Sub-Basin Management Plans for Clady, Eske, Glaskeelin, Leannan, Owencarrow and Owenea.
 - (d) A set back distance of ten times the tip height of proposed turbines from residential properties and other centres of human habitation.

Amendment No. 5

Insert new text into the Core Strategy at Chapter 10 as section 10.6.7 so as to state as follows (New text shown in blue):

10.6.7 Centres of Human Habitation

Definition:-

'Centre of Human Habitation' includes schools, hospitals, churches, residential buildings or buildings used for public assembly'.

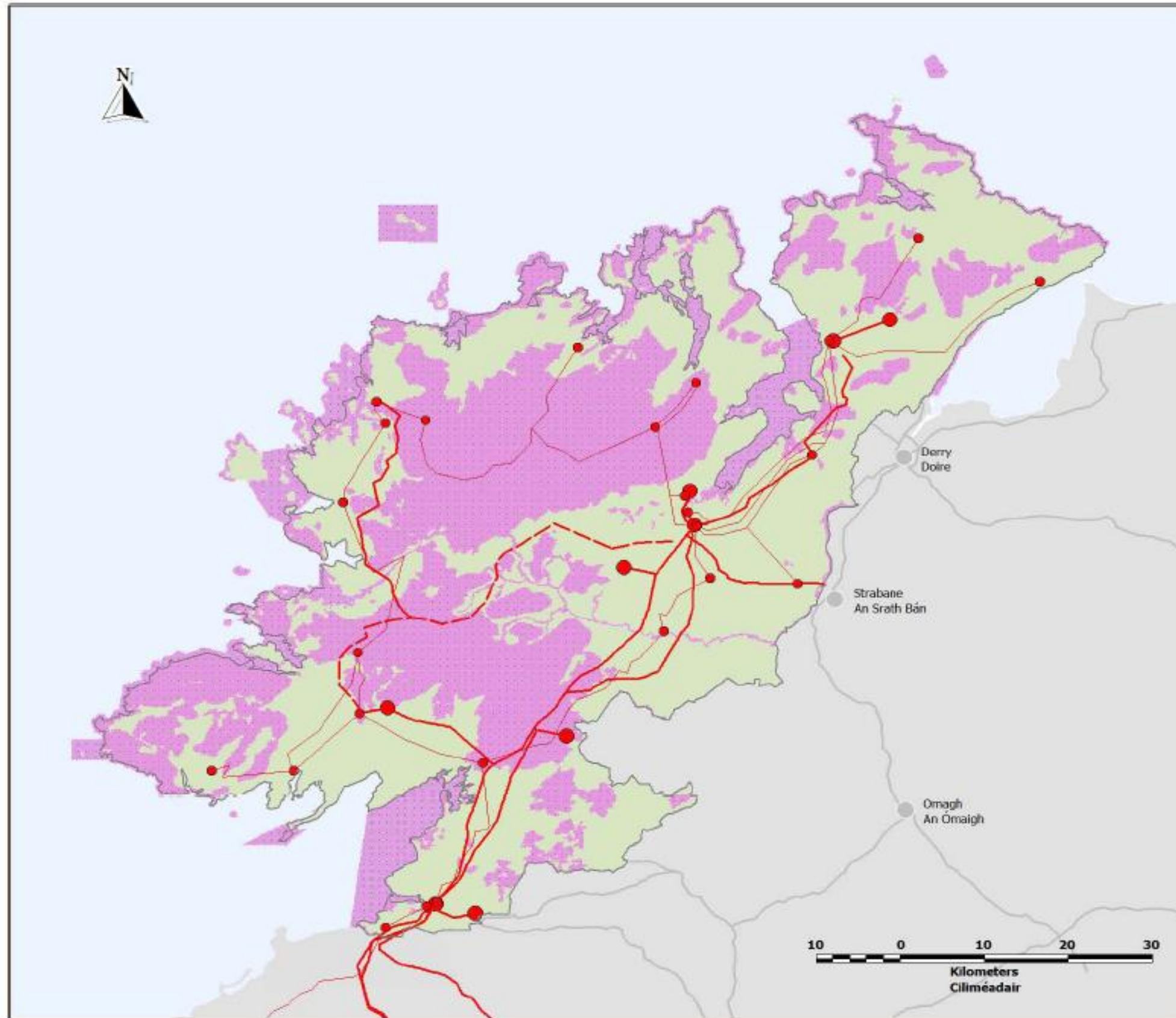
Appendix 1: Map 9; Wind Energy.

County Donegal Development Plan 2012 - 2018 (As Varied)
Plean Forbartha Contae Dhún na nGall 2012 - 2018 (arna leasú)

Map 9 / Léarscáil 9
Wind Energy / Fuinneamh Gaoithe

- Areas Open to Consideration / Limistéir a d'fhéadfaí a phlé
- Not Favoured Areas / Ceantair nach bhfuiltear i bhfách leo
- 38 Kv station / Stáisiún 38Kv
- 38 Kv Line / Líne 38 Kv
- 110 Kv Station / Stáisiún 110 Kv
- 110 Kv Line / Líne 110Kv
- 110 Kv Reinforcement Line - Operational from 2012 / Líne Átreisiúcháin 110 Kv - i bhfeidhm ó 2012

Map created July 2014 incorporating Variation No. 2 / Léarscáil cruthaithe Iúil 2014, agus Athrú Uimh. 2 intí.



Source - Donegal County Council
 Foinse - Comhairle Chontae Dhún na nGall

Ordnance Survey Ireland data reproduced under OS Licence Number 2014/10/CCMA/Donagel County Council. Unauthorised reproduction infringes Ordnance Survey Ireland and Government of Ireland copyright. Ordnance Survey Ireland, 2014. Donegal County Council, 2014.
 Sonraí ó d-táirgí Shúilbhreachtí Ordála Éireann agus a bhfuiltear i bhfeidhm ón Uimhir Chontracta SOE 2014/10/CCMA Comhairle Contae Dhún na nGall. Níl aon réimse 4 seo a bhfuiltear gan aitheas, nó éirí ar cúlphreacht Shúilbhreachtí Ordála Éireann agus Rialas na hÉireann. Shúilbhreachtí Ordála Éireann, 2014. Comhairle Contae Dhún na nGall, 2014.

To be read in conjunction with relevant accompanying text contained in the front section of this appendix as well as other relevant objectives & policies of the DDP.
 Le léamh i gcomhar leis an t-éireamh ábhartha tuiscáin atá chun tosaigh sa chuid seo den aitheas, chomh maith le cuspóirí agus bearta ábhartha eile sa DDP.